



Security for Data Operations in a New Era

Joshua Whitworth
Chief Deputy Controller
State of Idaho

Clai Collier
Director GovCloud Portfolio
Management
Infor

J.D. Williams
State & Local Government
Infor







State Controller's Office



Brandon D Woolf



Division of
Statewide Accounting

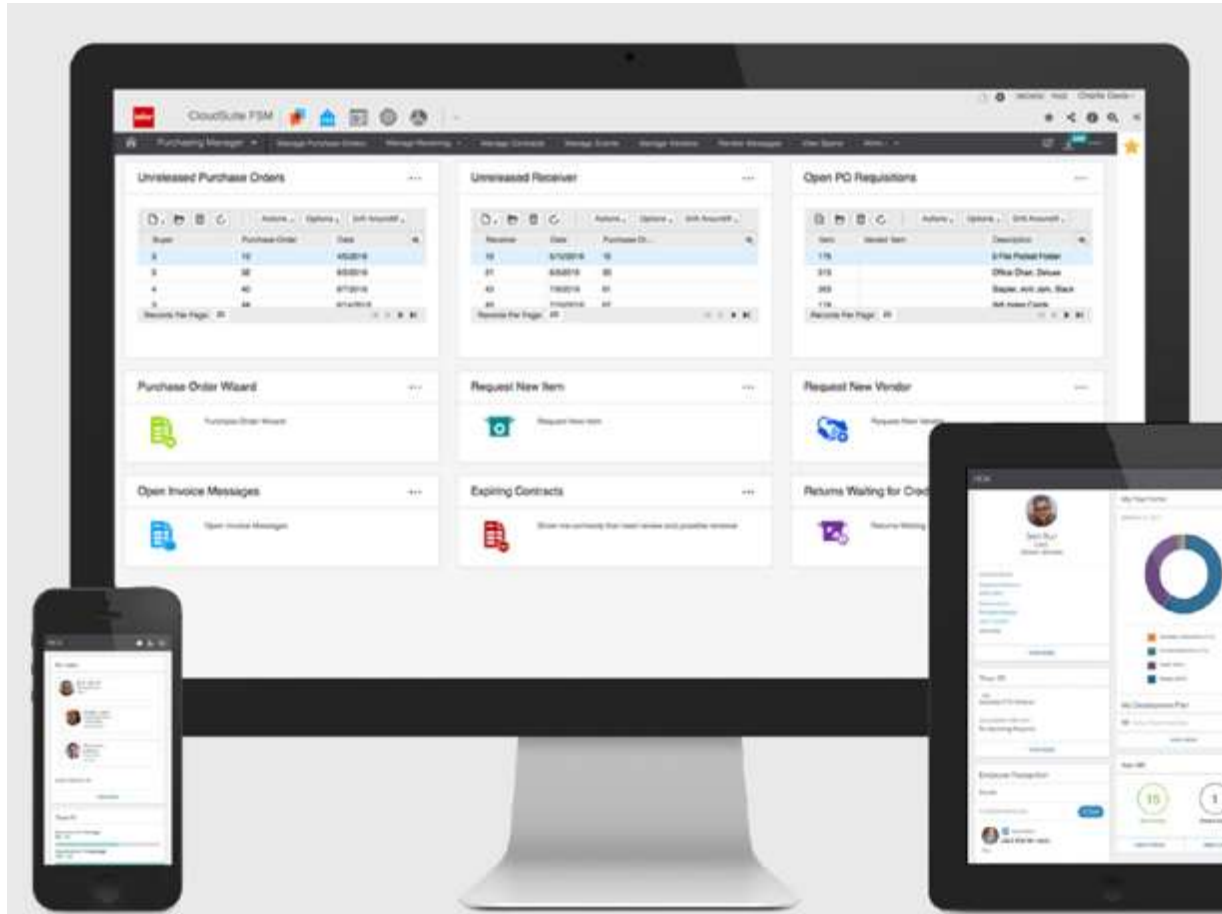


Division of Statewide
Payroll



Computer Services
Center

What is Luma?



A modern, cloud ERP is a software suite used to manage day-to-day business activities. ERP systems tie together and define a plethora of business processes and enable the flow of data between them, from a requisition to cutting a check, and hire to retire!

Luma Project Vision and Goals

Acquire, implement, and sustain a statewide enterprise system that modernizes and transforms the way the State of Idaho does business, improves transparency, and provides a core foundation for the future.

Goals:

1

An ERP solution that all agencies will use for budget planning, financial management, procurement, payroll, and human capital management.

2

Improve productivity and reduce costs by eliminating redundant systems and unnecessary complexity required to perform operational and administrative services.

3

Modernize and standardize business processes for alignment with industry best practices inherent in COTS software for efficient workflow and accurate information reporting.

4

Increase transparency of government operations and expenses.

5

Reduce risk exposure associated with the current outdated software systems.

6

Improve decision making by capturing and being able to report consistent expandable sets of data.

7

Ensure strength and efficiency of the State's **Data security management**.

Why Modernize?



Outdated Software

Modernizing will reduce risk exposure associated with the current outdated software/mainframe systems.



Eliminating Redundancy

Modernizing will reduce costs by eliminating redundant systems, duplicate entry, and unnecessary complexity.



Data Security

Modernizing will provide industry best standard security for all state financial and PII data.



Increased Transparency

A modernized system will illuminate government operations and expenses, allowing citizens unprecedented checkbook level spending detail.

Benefits of Luma



Access Luma
from almost
anywhere



Agencies speak
the same
“language”
making it easy to
collaborate



Greater
efficiency with
automation so
users can focus
on high priority
activities



Enhanced
reporting with
more options to
compare data



Industry best
security and
continual
software
upgrades

Increasing Security: Multi Factor Authentication

With the integration of a statewide standard for multifactor into the Luma system sign-in process, state employees will now have an additional layer of authentication beyond their State ID and password to access Luma applications.

This form of authentication provides the required level of security to access a FEDRAMP certified system.

What is PII?

PII includes: Name, email, home address, phone #

Sensitive PII includes:

If Stand-Alone:

- Social Security number
- Driver's license or state ID #
- Passport number
- Alien Registration Number
- Financial account number
- Biometric identifiers

If Paired With Another Identifier:

- Citizenship or immigration status
- Medical information
- Ethnic or religious affiliation
- Sexual orientation
- Account passwords
- Last 4 digits of SSN
- Date of birth
- Criminal history
- Mother's maiden name

What is the Federal Risk and Authorization Management Program (FedRAMP)

- Accelerate the adoption of secure cloud solutions through reuse of assessments and authorizations
- Improve confidence in the security of cloud solutions and security assessments
- Achieve consistent security authorizations using a baseline set of agreed-upon standards for cloud product approval in or outside of FedRAMP
- Ensure consistent application of existing security practices
- Increase automation and near real-time data for continuous monitoring
- Provides four security baseline options based on NIST SP 800-53 in lieu of FIPS-199

12



FedRAMP at-a-glance

We cover **more than**

5 MILLION ASSETS

of the world's largest cloud providers

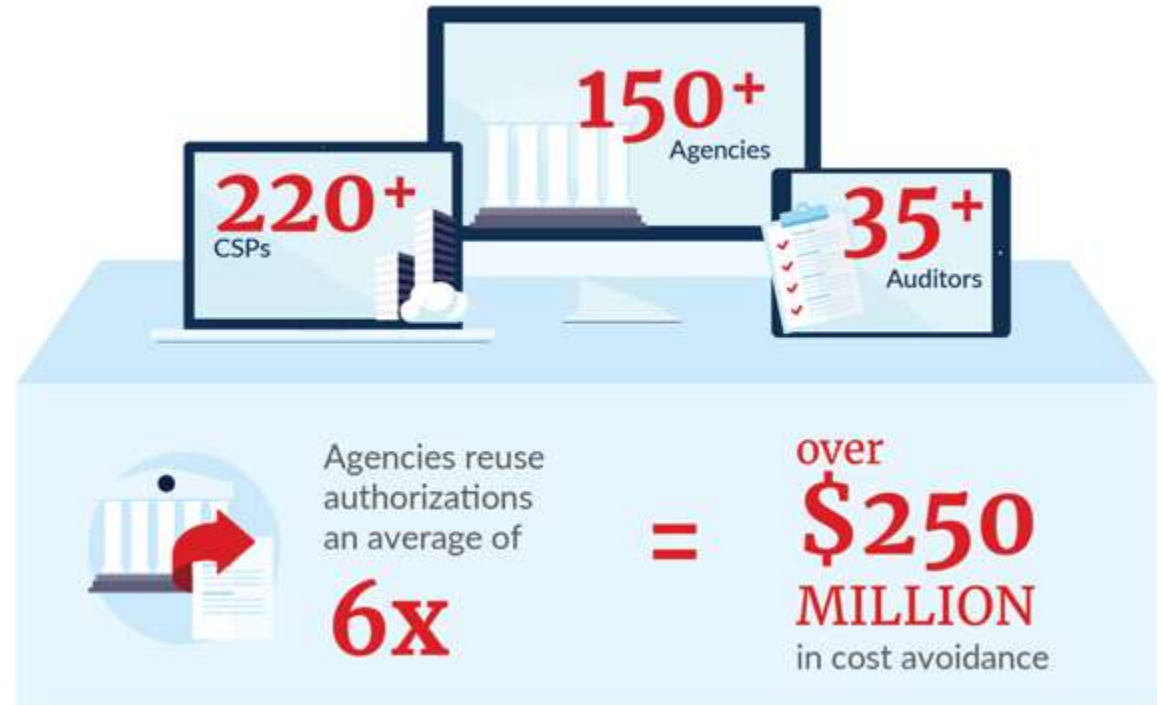
&

1/3

of the world's internet traffic through our program



FedRAMP



WE NOW OFFER

4 security baselines so government can match security to risk



HIGH
(421 controls)



LOW
(125 controls)



MODERATE
(325 controls)



LI SAAS
(36 controls*)

*testable

Federal Information Security Management Act of 2002 (FISMA) PS (Federal) Use Cases

LI-SaaS Baseline

- limited adverse effects on an Agency's operations
- Can't Store PII

FedRAMP's Moderate Baseline (Infor Today)

- Can store Controlled Unclassified Information (CUI): PII, PHI but not Controlled Defense Information (CDI)
- nearly 80% of FedRAMP CSPs fit here

FedRAMP High Baseline

- For Sensitive CUI but not CDI – including data that involves the protection of life and against financial ruin.
- Mainly seen in law enforcement and emergency services systems, financial systems, health systems

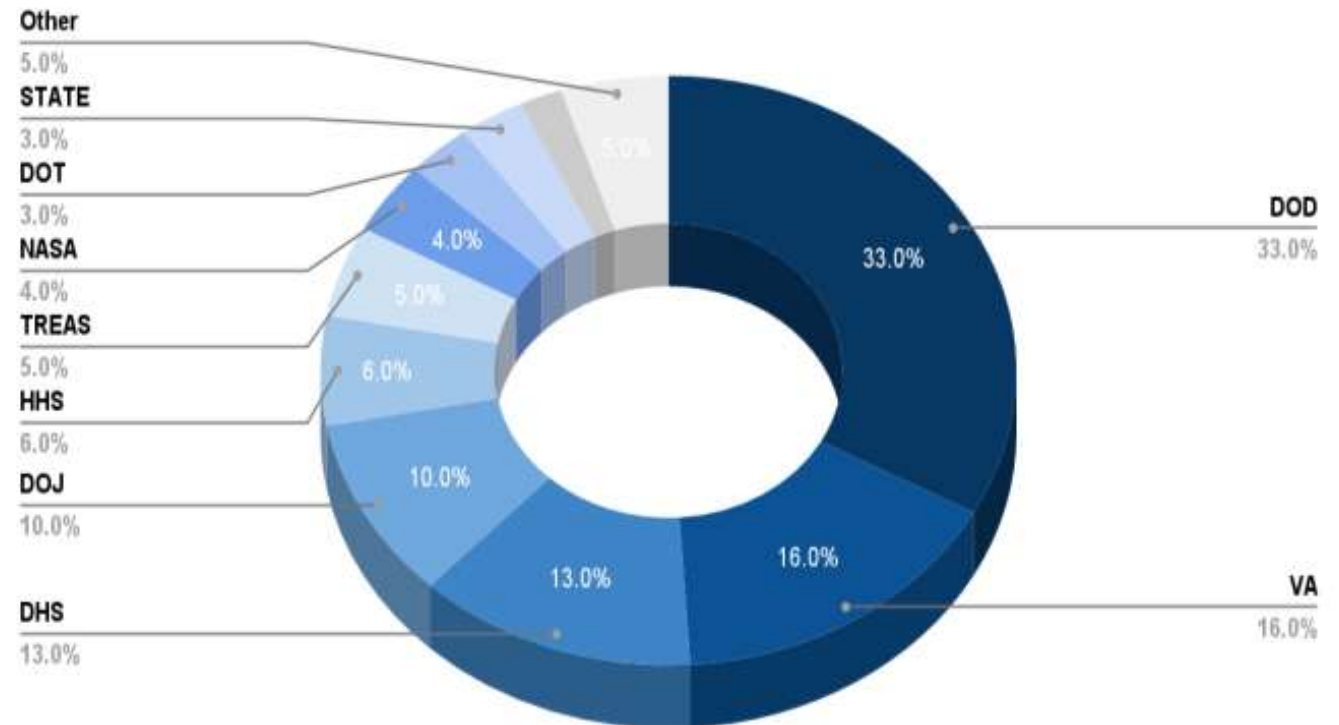


Figure 1: High Baseline Across the U.S. Government

https://www.fedramp.gov/assets/resources/documents/CSP_Authorization_Playbook_Getting_Started_with_FedRAMP.pdf

OMB Federal CIO Executive Order; Dec 8, 2011: Cloud services that hold federal data must be FedRAMP authorized

What are the use cases for StateRAMP?



What are the business objectives for your state's data impact?

Category 1 (FedRAMP Low)

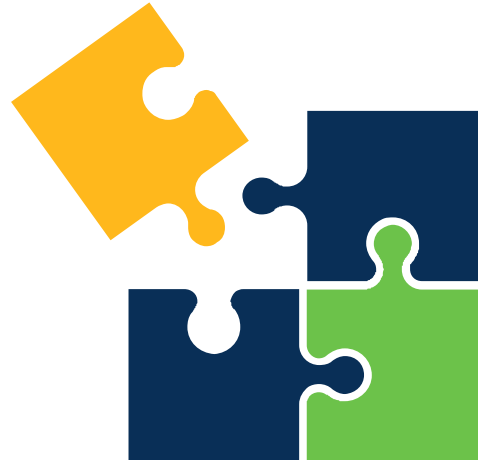
- Process, transmit, and / or store non-sensitive State data, metadata and / or data that may be released to the public

Category 3 (FedRAMP Moderate)

- PII defined by US DoL
- PHI (HIPAA)
- PCI defined by PCI SSC
- Governments requiring HA

CJI (FedRAMP +)

- Process, transmit and / or store criminal justice information (CJI)



Question & Answer Session